

# Fuji

## FA-45 Series Angle Grinders, Sanders & Cutter



- **High Power**
- **Extended Service Life**
- **Compact with low head design**

The FA-45 series from Fuji are versatile 5" angle grinders, 5" angle cutter and 7" angle sanders. Thanks to the compact and durable design, FA-45 series are ideal for deburring, weld bead removal or basic chamfering in shipbuilding, bridge building, construction, foundry and general metal working.



# FA-45 SERIES ANGLE GRINDERS

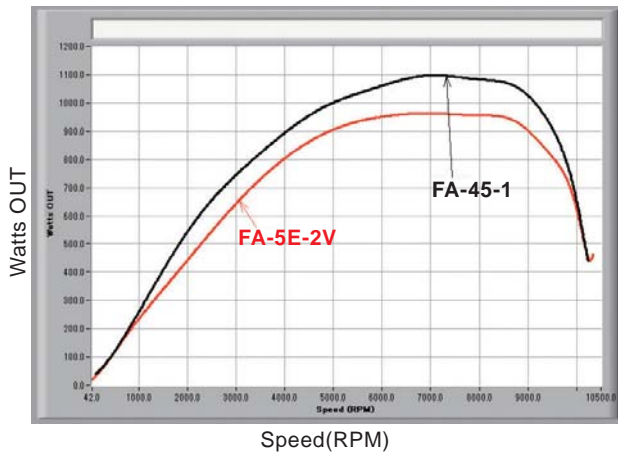
## 5" ANGLE GRINDERS

### FEATURES & BENEFITS

- Power to weight ratio: max 1100W, 1.48hp \*FA-45-1 only
- Low head design for easy operation : 60.4mm, 2.38"
- Cooling of gears by air flow extend service life



### POWER COMPARISON VERSUS CURRENT TOOL



— FA-45-1  
— FA-5E-2V

#### Condition of comparison test

Air pressure : 0.63MPa  
Hose size : inner diameter  $\varnothing$ 9.5mm (3/8inch) x 6m  
Measurement equipment : MAGTROL HD-800-6N

### APPLICATIONS

- Foundry
- Metal working
- Ship and boat building
- Bridge Building
- Construction
- Oil, Gas & Petrochemical maintenance



# FA-45 SERIES ANGLE GRINDERS & CUTTER



FA-45-1



FA-45-2F



FA-45-3F



FA-45-5F



FA-45-6F



FA-45-7F



FA-45-12F

## SPECIFICATIONS

Model	Part Number	Throttle Type	Max Dia. (Wheel size)		Spindle Thread	Free Speed rpm	Power		Overall Length		Weight		Max. Air consumption		Vibration m/s <sup>2</sup>	Inlet in
			mm	in			W	hp	mm	in	kg	lb	m <sup>3</sup> /min	cfm		
FA-45-1	5412104874	Roll	125 x 6 x 22	5 x 1/4 x 0.866	M8-P1.25(F)	10900	1100	1.48	208	8.2	2.0	4.4	1.09	38.5	5.1	3/8" Rc
FA-45-2F N EC	5412104918	Lock-off Lever	125 x 6 x 22.2	5 x 1/4 x 7/8	M14 x 2.0(M)	10900	950	1.27	259	10.2	2.1	4.6	1.08	38.1	5.2	3/8 NPT
FA-45-3F N EC	5412104919	Lock-off Lever	125 x 6 x 22.2	5 x 1/4 x 7/8	5/8-11UNC(M)	10900	950	1.27	259	10.2	2.1	4.6	1.08	38.1	5.2	3/8 NPT
FA-45-5F N EC	5412104920	Lock-off Lever	125 x 6 x 22.2	5 x 1/4 x 7/8	M14 x 2.0(M)	12000	1000	1.34	259	10.2	2.1	4.6	1.14	40.3	5.4	3/8 NPT
FA-45-6F N EC	5412104921	Lock-off Lever	125 x 6 x 22.2	5 x 1/4 x 7/8	5/8-11UNC(M)	12000	1000	1.34	259	10.2	2.1	4.6	1.14	40.3	5.4	3/8 NPT
FA-45-7F N EC	5412104922	Lock-off Lever	125 x 6 x 22.2	5 x 1/4 x 7/8	5/8-11UNC(M)	7000	870	1.17	259	10.2	2.1	4.6	0.82	29.0	3.4	3/8 NPT
FA-45-12F N EC	5412105555	Lock-off Lever	125 x 6 x 22.2	5 x 1/4 x 7/8	M8-P1.25(F)	12000	1000	1.34	259	10.2	2.1	4.6	1.14	40.3	5.4	3/8 NPT

\* Air Hose size: 9.5mm, 3/8"

\* All models are side exhaust

\* Roll throttle type model: Japanese standard model

\* Lock-off Lever throttle type models: CE certified models

## 5" ANGLE CUTTER

### FEATURES & BENEFITS

- Designed for diamond cutter 5" best for various materials cutting
- Low head design: 60.4mm, 2.38"
- Cooling of gears by air flow extend service life
- Max output: 1100W, 1.48hp



FA-45-8

## SPECIFICATIONS

Model	Part Number	Throttle Type	Sanding Disc		Spindle Thread	Free Speed rpm	Power		Overall Length		Weight		Max. Air consumption		Air hose size		Vibration m/s <sup>2</sup>	Inlet in
			mm	in			W	hp	mm	in	kg	lb	m <sup>3</sup> /min	cfm	mm	in		
FA-45-8	5412104964	Roll	125 x 2 x 20	5 x 0.079 x 0.787	M8-P1.25(F)	10900	1100	1.48	208	8.2	2.0	4.4	1.09	38.5	9.5	3/8	5.1	3/8" Rc

\* Air Hose size: 9.5mm, 3/8"

\* Side exhaust

# FA-45 SERIES ANGLE SANDER

## 7" ANGLE SANDERS

### FEATURES & BENEFITS

- Low head design for easy operation: 60.4mm, 2.38"
- Cooling of gears by air flow extend service life
- Efficient sanding operation provides versatile solution
- Sanding disc size: 180mm, 7"



FA-45-11



FA-45-9F



FA-45-10F

### SPECIFICATIONS

Model	Part Number	Throttle Type	Sanding Disc		Spindle Thread	Free Speed rpm	Power		Overall Length		Weight		Max. Air consumption		Air hose size		Vibration m/s <sup>2</sup>	Inlet in
			mm	in			W	hp	mm	in	kg	lb	m <sup>3</sup> /min	cfm	mm	in		
FA-45-9F N EC	5412104923	Lock-off Lever	180 x - x 22.2	7 x - x 7/8	M14 x 2.0(M)	7000	870	1.17	259	10.2	1.8	4.0	0.82	29.0	9.5	3/8	< 2.5	3/8 NPT
FA-45-10F N EC	5412104924	Lock-off Lever	180 x - x 22.2	7 x - x 7/8	5/8-11UNC(M)	7000	870	1.17	259	10.2	1.8	4.0	0.82	29.0	9.5	3/8	< 2.5	3/8 NPT
FA-45-11	5412104965	Roll	180 x - x 22	7 x - x 0.866	M8-P1.25(F)	7000	870	1.17	208	8.2	1.9	4.2	0.82	29.0	9.5	3/8	< 2.5	3/8"Rc

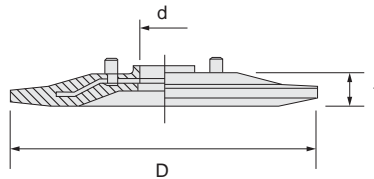
\* Air Hose size: 9.5mm, 3/8"

\* All models are side exhaust

\* Roll throttle type model: Japanese standard model

\* Lock-off Lever throttle type models: CE certified models

### RUBBER BACKING PADS FOR ANGLE SANDERS



Item No.	Part Number	Size								Maximum Free Speed min-1	Models
		D		t		d		Pin Space			
		mm	in	mm	in	mm	in	mm	in		
RP-5-5	5412055547	125	5	17	43/64	22.2	7/8	46	1 13/16	8,500	FA-45-11
RP-7	5412055550	180	7	15.0	19/32	22.2	7/8	46	1 13/16	7,000	FA-45-9F, -10F

Fuji Authorized Distributor:



[www.fujitools.com](http://www.fujitools.com)