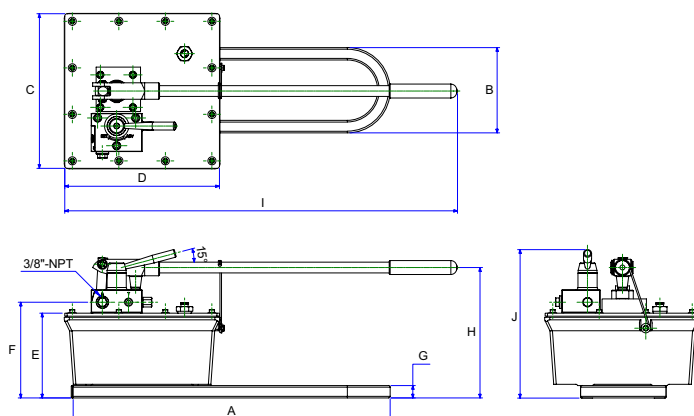


HAND PUMPS

BETEX HP80 SERIES, STEEL HAND PUMPS, HEAVY-DUTY, 8 LITER, 700 BAR



- Rugged construction made of steel
- Automatic 700 bar overload-relief valve protects components in hydraulic systems and ensures safe operation
- New inlet/outlet design features slow deflation function. This allows multidirectional operation
- Two-speed pumps provide rapid pumping to load the cylinder quickly
- Specially designed HP80D is for double-acting cylinders without the need for extra controlling valve and adapters



HP series

TIP! Use in combination with accessories, page 70-74

Type	Pressure rating (bar)		Usable oil capacity cm ³	Oil volume per stroke cm ³		A	B	C	D	E	F	G	H	I	J	Weight Kg
	1st stage	2nd stage		1st stage	2nd stage	mm	mm	mm	mm	mm	mm	mm	mm	mm	mm	
HP80	27.5	700	8000	113	4	635	171	310	310	170	192	25	261	787	298	25
HP80D	27.5	700	8000	113	4	635	171	310	310	170	194	25	261	787	318	25