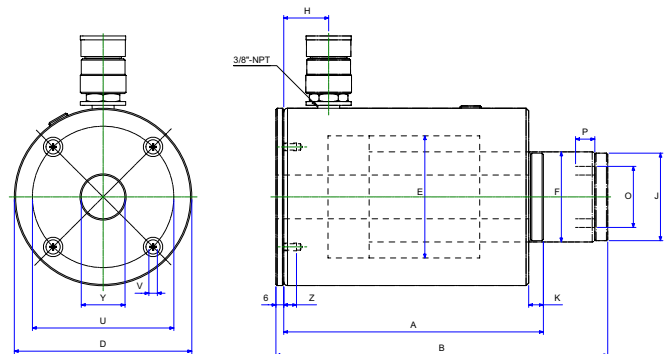


ALUMINIUM CYLINDERS

BETEX ACHC series, light weight hollow aluminium cylinder, spring return, single acting



Model ACHC 30-60T



Model: ACHC series

- Half the weight of steel cylinders
- Heavy duty spring for fast & full return
- Chrome plated centre hole for extra protection
- Large bearing surfaces for side load protection
- Carrying handles standard on all models
- Black hard-anodized coating reduces wear & corrosion
- Stop rings for piston blow-out protection
- Rod wiper protects inner cylinder from dirt

Capacity : 30 - 60 ton
 Stroke : 50 - 150 mm
 Max. working pressure : 700 bar

Base Plate Mounting holes dimensions (mm)

Cylinder model/capacity ton	Bolt circle U mm	Thread V mm	Thread Dept Z mm	Y ø mm
ACHC-30	110	M6 x 1.0	10	34
ACHC-60	160	M6 x 1.0	10	34

ACHC series

Type	Capacity ton	Stroke mm	Oil cap cm ³	A Height Retracted mm	B Height Extended mm	D ø mm	E ø mm	F ø mm	H mm	J ø mm	K mm	O mm	P mm	Weight Kg
ACHC302	30	50	275	202	252	138	95	70	35	68	11.5	1 7/8"-16	25	10
ACHC306	30	150	825	327	477	138	95	70	35	68	11.5	-	-	14
ACHC602	60	50	447.5	250	300	200	125	100	50	89	14	2 3/4"-16	-	19.5
ACHC606	60	150	1342	350	500	200	125	100	50	89	14	-	-	25

TIP! Use in combination with: hand- and foot pumps, page 55-67. Accessories, page 70-73